

eWON COSY Setup and Installation

- Download and install eCatcher
- Create your Talk2M account
- Add your eWON (COSY) to your account
- Copy registration key from Talk2M account
- Connect a Ethernet cable from your computer to one of the 4 ports on the (LAN side) eWON COSY
- Log into your COSY using your internet browser
- Configure your COSY using the setup wizard
- Installation is complete



Download & Install eCatcher & eBuddy

Download eCatcher (VPN Client software)

Please visit www.ewon.us

Click → Support → Software Download



Support

You're never alone when you have a problem!



> Manuals, Documentation, FAQ

Documentation, up-to-date manuals, firmware, technical documents and knowledge base with the most frequently asked questions (FAQs)

> Contacting support

Use the following form to contact your local distributor

> Software download



> viewON 2 registration

> Firmware release



Software download

Download the newest version here

Description	File	Revision
eBuddy 2.0 Free eWON add-on tool to easily <ul style="list-style-type: none">■ set up eWON IP address■ upload eWON firmware upgrades■ backup/restore data and configurations Requirements: <ul style="list-style-type: none">■ Windows 2000, XP or Vista	 ebuddysetup.exe	release note
eCatcher 3.1 Easy, secure, Internet remote access with Talk2M. For Free+ and Pro services Requirements: <ul style="list-style-type: none">■ XP, Vista or 7 - 64 bits	 ecatchersetup.exe	release note



Install eCatcher

Install eCatcher (VPN Client) on the computer that will be used for remote access.

NOTES:

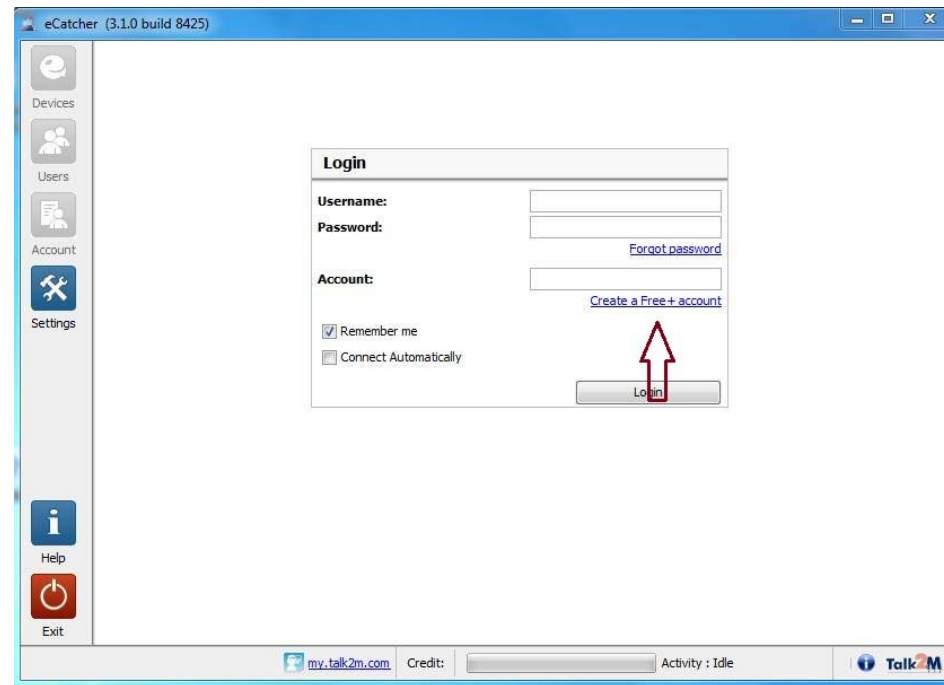
- Download to local hard drive
- Must be a Windows based PC. If using Windows 7 RIGHT click on eCatcher.exe and run as administrator even if you have admin rights on that PC.
- Install may require the latest Java update to install properly



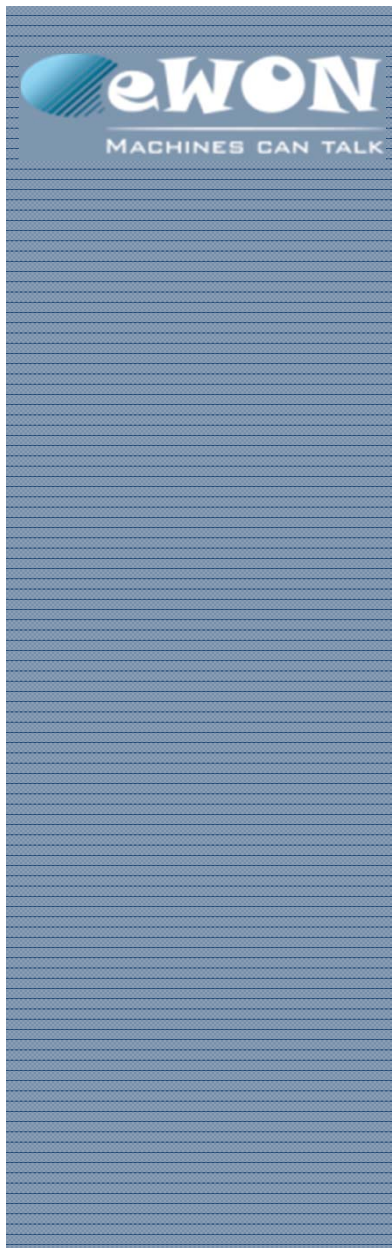
Launch eCatcher & Create your Talk2M Account

eCatcher does not create a desktop short cut. Please open and run eCatcher from Start → Programs

Create or log into your Talk2M account



****** If eCatcher cannot connect to Talk2M make sure you don't have a proxy server on your network




Create your Talk2M account

new Account


Talk2M Now machines can talk

New Talk2M Free+ account
Please fill the following fields to create your Talk2M free+ account.
You have to enter at least the name you have chosen for your account and informations related to the first user.

 **Account nam...** check availability **User name :**

Password : **Confirm password :**

Email : **Confirm email :**

 Account name may not be empty

Cancel Next

new Account

Talk2M Now machines can talk

New Talk2M Free+ account
Here, you may fill your company information.

 **Company Name:** **City:**

Company address: **Post code:**

Company country: **Language:**

VAT number:

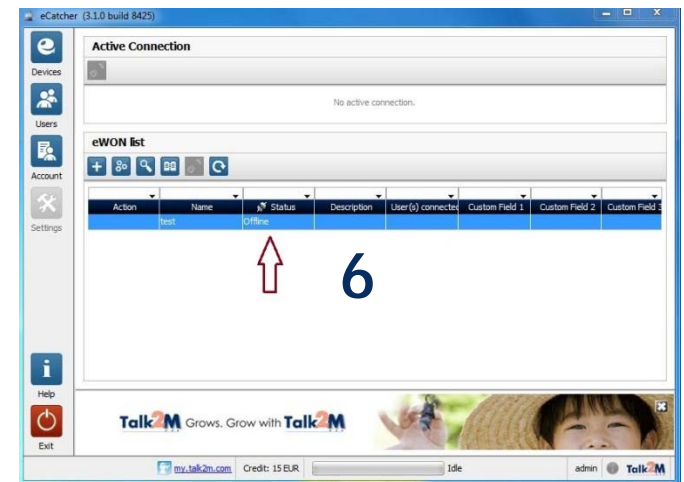
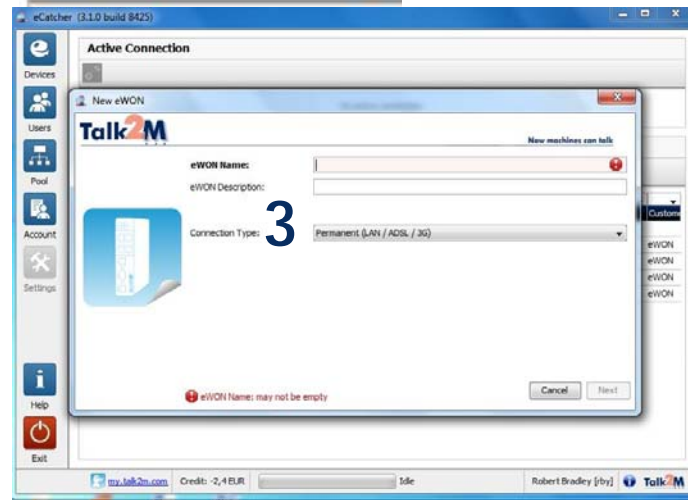
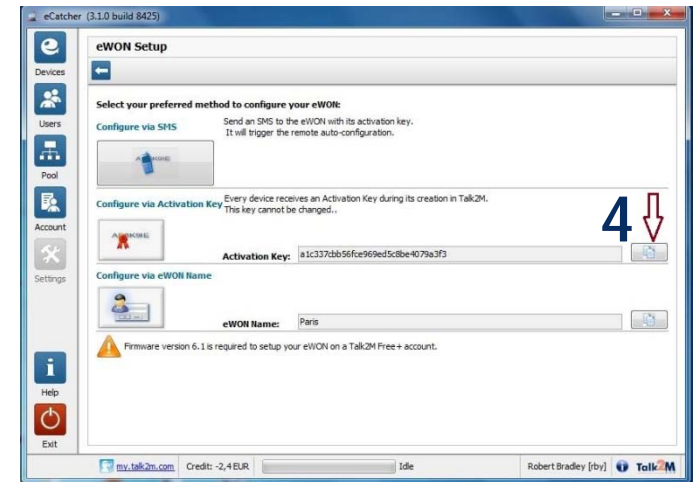
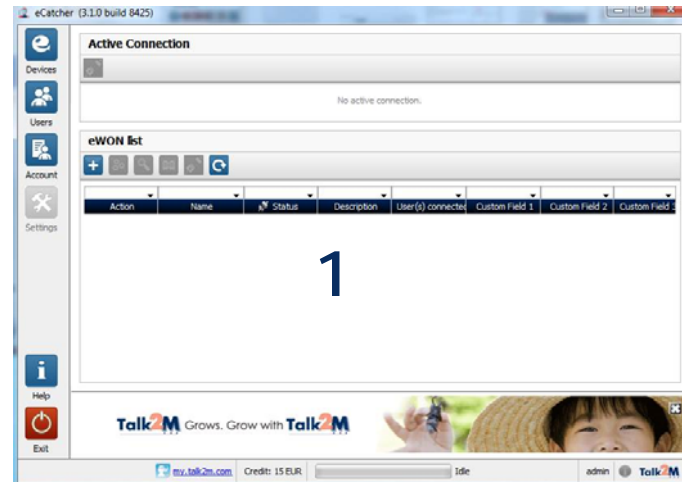
Industry sector:

Previous Finish



Add a eWON to your account

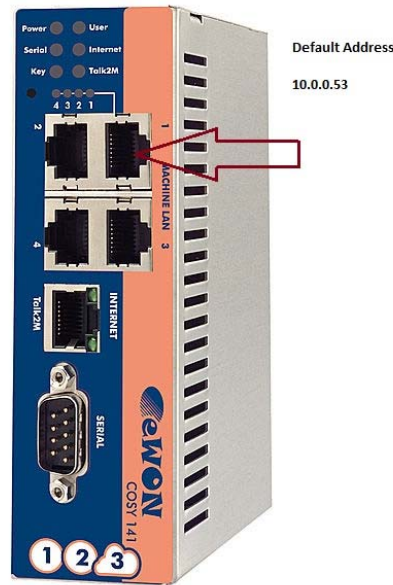
Add a eWON to your Talk2M account



**** Step 4 is very important copy the activation key by clicking on the clipboard. You will need this key to complete the configuration of your eWON**



Connect to
your eWON



Begin configuration of your router by Connecting a CATX network cable to one of the eWONs 4 LAN side switch ports. This cable does NOT have to be a cross cable.

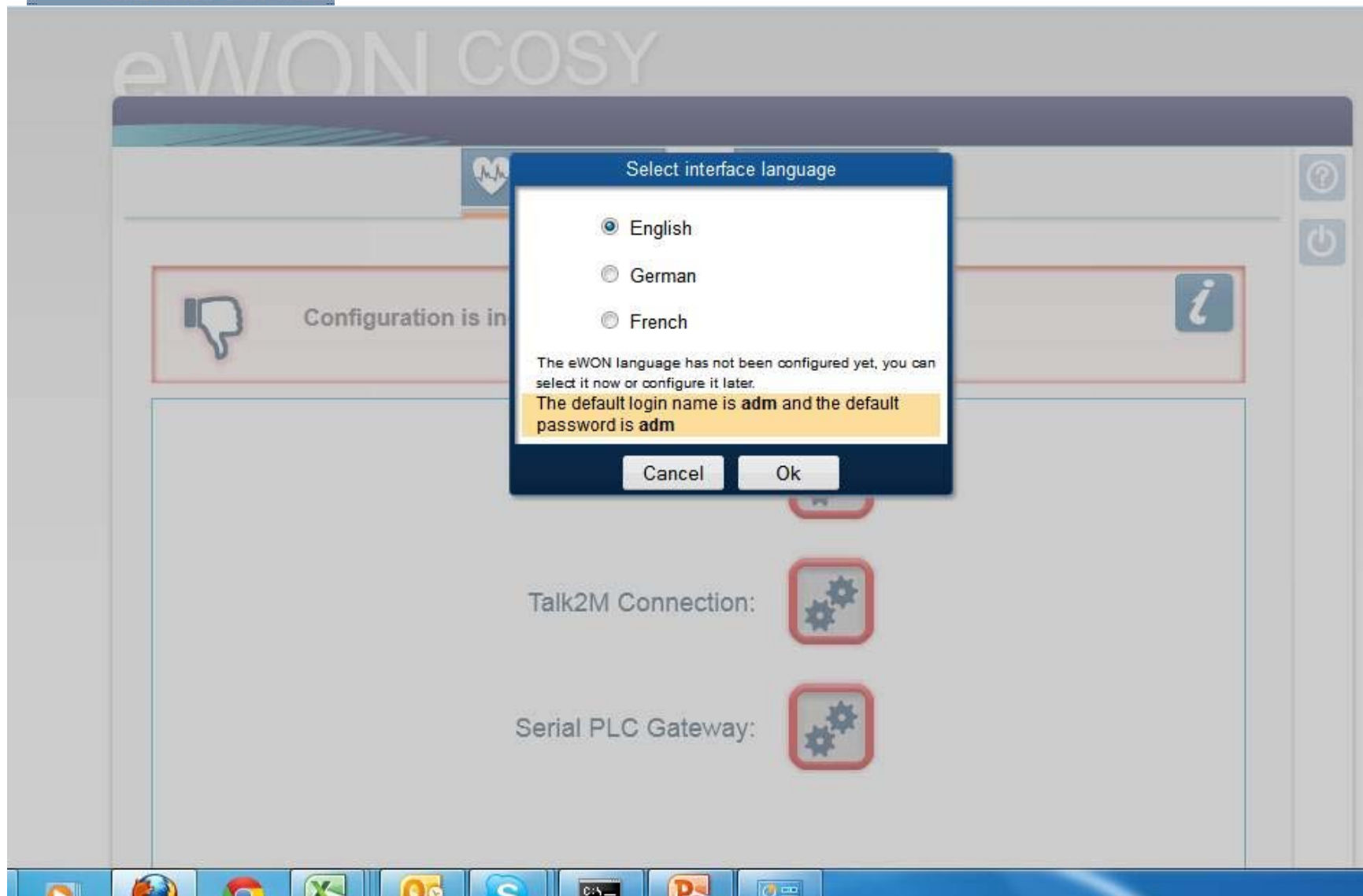
The default address of the eWON is 10.0.0.53. Subnet Mask 255.255.255.0

Your PC will need to be on the same network so you can communicate with it via your internet browser or use our eBuddy utility to change the IP of the eWON to match your PC.

Now that your PC and eWON are on the same network you can browse to the appropriate IP address (10.0.0.53) if you did not change eWONs.

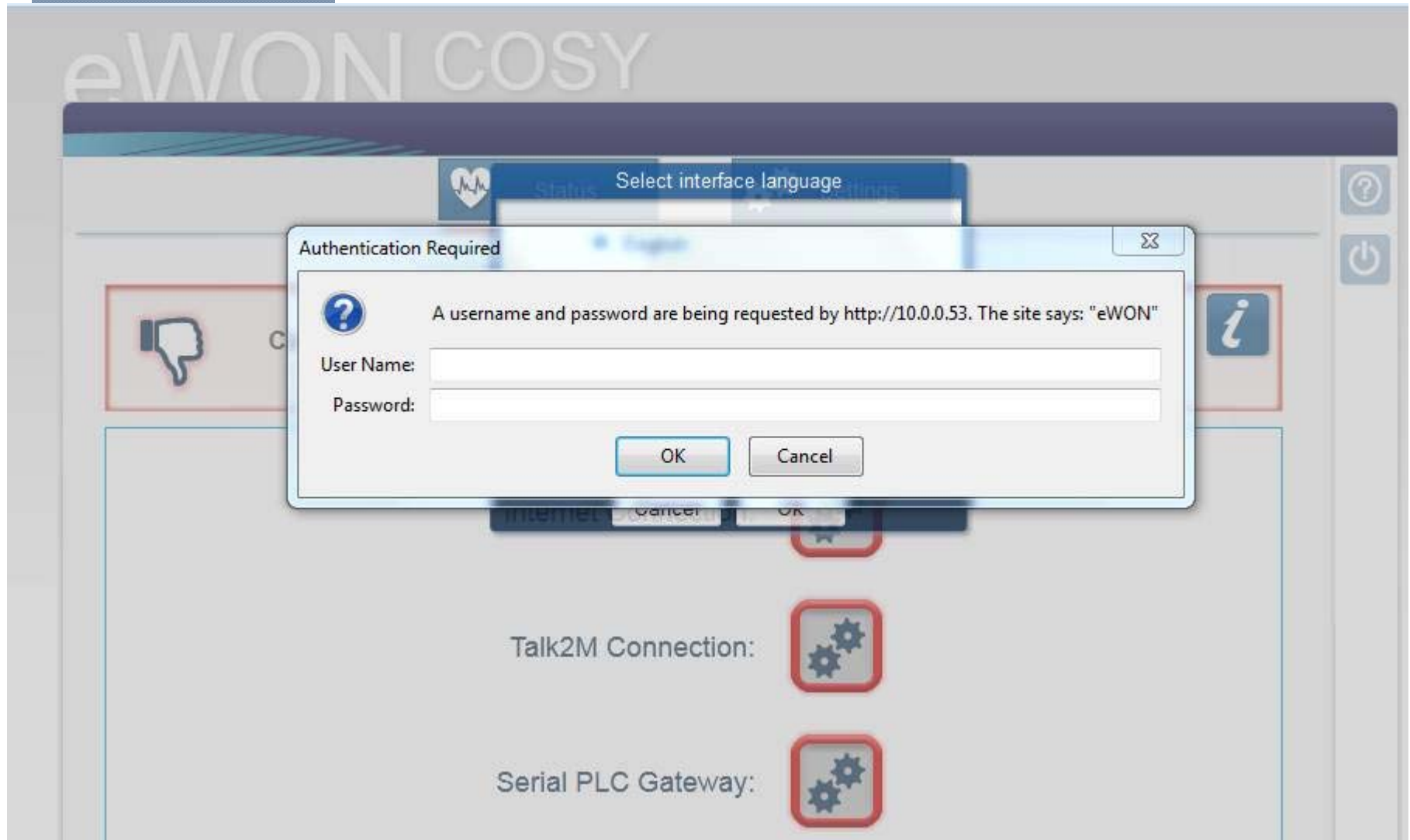
Finish the configuration by following the screen prompts.

Select Language





Log into eWON
Default User Name: adm
Password: adm




Launch Setup Wizards


eWON COSY

Shortcut Menu

Status Settings

System ☐ Internet ☐ Talk2M ☐ Gateway ☐ Maintenance 

Quick Launch Wizard.



This wizard will drive you through the eWON configuration steps:

- 1- System
- 2- Internet
- 3- Talk2M
- 4- Gateway

You can also run the configuration steps separately by using the above menus.



Modify ADM password. (Highly suggested for security)

eWON COSY

Shortcut Menu

Status Settings

System ☐ Internet ☐ Talk2M ☐ Gateway ☐ Maintenance ☐

User Setup

Erase all first: ☒
All configuration parameters will be reset.

eWON name:
Will help you to identify eWON

User name:
The user name is not editable

Password:

Retype-Password:

1 2 3 Next >>



Select Date and Time

eWON COSY

Shortcut Menu

Status Settings

System ☐ Internet ☐ Talk2M ☐ Gateway ☐ Maintenance ☐ Home

Date and time

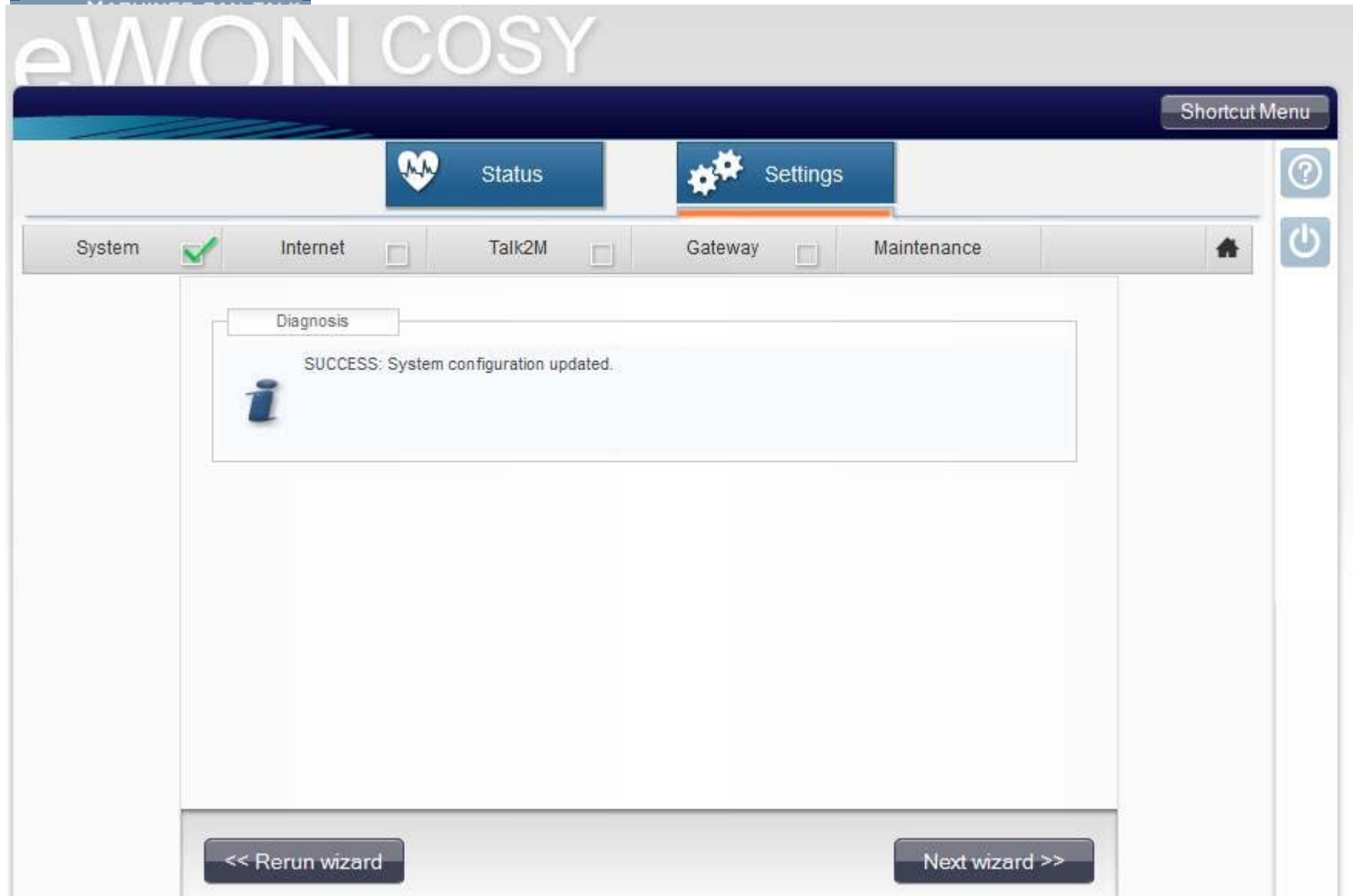
Date: dd/mm/yyyy

Time:

<< Prev 1 2 3 Save >>



Continue To Next Wizard





Click Next

eWON COSY

Shortcut Menu

Status

Settings

System ☒

Internet ☐

Talk2M ☐

Gateway ☐

Maintenance ☐

Home

Help

Power

Internet connection

Internet Connection: Ethernet Internet interface

Physical protection: Digital Input not used

1

2

3

4

Next >>



Configure Internet Port IP address

eWON COSY

Shortcut Menu

Status Settings

System ☒ Internet ☐ Talk2M ☐ Gateway ☐ Maintenance ☐

Ethernet WAN connection

Address Setup **DHCP**

IP Address:

Subnet Mask:

Default Gateway:

DNS ☒ Via DHCP

Primary DNS:

Secondary DNS:

HTTP Proxy

☐ Connect to Talk2M through Proxy

Do you connect to Talk2M through an HTTP Proxy?

<< Prev 1 2 3 4 Next >>



Test Internet Connectivity

eWON COSY

Shortcut Menu

Status Settings

System ☒ Internet ☐ Talk2M ☐ Gateway ☐ Maintenance

Internet connection is configured

Click Next to start the **Internet connection test**:

☐ Test online address.

If this checkbox is selected, eWON will perform an online IP check.
If you have configured a connection through proxy or on an intranet, do not select this test.

<< Prev 1 2 3 4 Test>>



Continue To Next Wizard

eWON COSY

Shortcut Menu

Status Settings

System ☒ Internet ☒ Talk2M ☐ Gateway ☐ Maintenance

Current operation

Finished 10

Results

☒ Internet connection

Online IP Check Operation skipped

Diagnosis

SUCCESS: Internet connection tested

<< Rerun wizard Next wizard >>



Select Registration for Talk2M

eWON COSY

Shortcut Menu

Status

Settings

System ☒

Internet ☒

Talk2M ☐

Gateway ☐

Maintenance ☐

Select your preferred method for registering the eWON on Talk2M.com?

Register with eWON NAME
Use the eWON Talk2m name and your Talk2m login and password.
The eWON must first be defined in Talk2M.

Register with ACTIVATION KEY
Use the eWON 'Activation Key' provided by talk2M.com.
The eWON must first be defined in Talk2M.

Important: Your eWON must have a working Internet Connection
Before using the wizard, the eWON Internet access must be correctly configured.

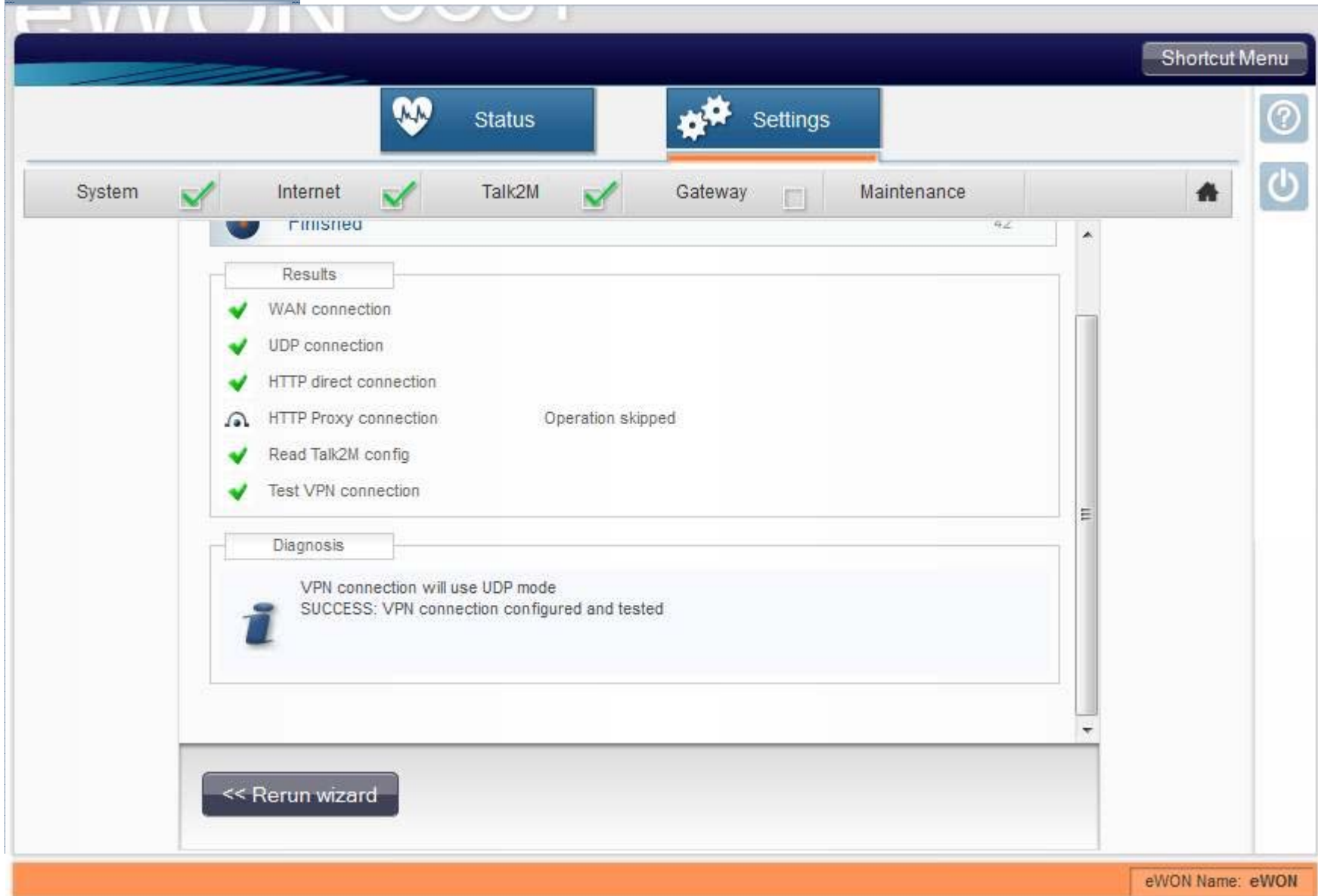
1

2

3

Next >>

Test if your eWON can log in to Talk2M



The screenshot displays the eWON web interface with the 'Settings' tab selected. A progress bar at the top shows the status of various system components: System (checked), Internet (checked), Talk2M (checked), Gateway (unchecked), and Maintenance (unchecked). The main content area is titled 'Finished' and contains two sections: 'Results' and 'Diagnosis'.

Results:

- WAN connection:
- UDP connection:
- HTTP direct connection:
- HTTP Proxy connection: Operation skipped
- Read Talk2M config:
- Test VPN connection:

Diagnosis:


VPN connection will use UDP mode
 SUCCESS: VPN connection configured and tested

At the bottom of the main content area, there is a button labeled '<< Rerun wizard'.


The footer of the interface shows 'eWON Name: eWON'.

Select what type of serial device will be used


Shortcut Menu





Status




Settings





System 

Internet 

Talk2M 

Gateway ☐

Maintenance 



Serial PLC Gateway configuration

Remark: Ethernet gateway is always enabled

IO Protocol

- ☒ Serial PLC Gateway not used
- ☐ TCP to Serial port (Virtual COM)
- ☐ Modbus TCP to Modbus RTU
- ☐ XIP to Unitelway (Schneider)
- ☐ EtherNet/IP to DF1 (Allen-Bradley)
- ☐ FINS TCP to FINS Hostlink (OMRON CS/CJ)
- ☐ ISOTCP to PPI (Siemens S7-200)

1

2


3


Next >>


eWON Name: eWON


Save your configuration


Shortcut Menu

 Status


 Settings

System 

Internet 

Talk2M 

Gateway ☐

Maintenance 

Serial PLC gateway not used

You have selected to disable the serial PLC gateway

You can enable it later by running the "Gateway" wizard or the full re-configuration wizard.

<< Prev

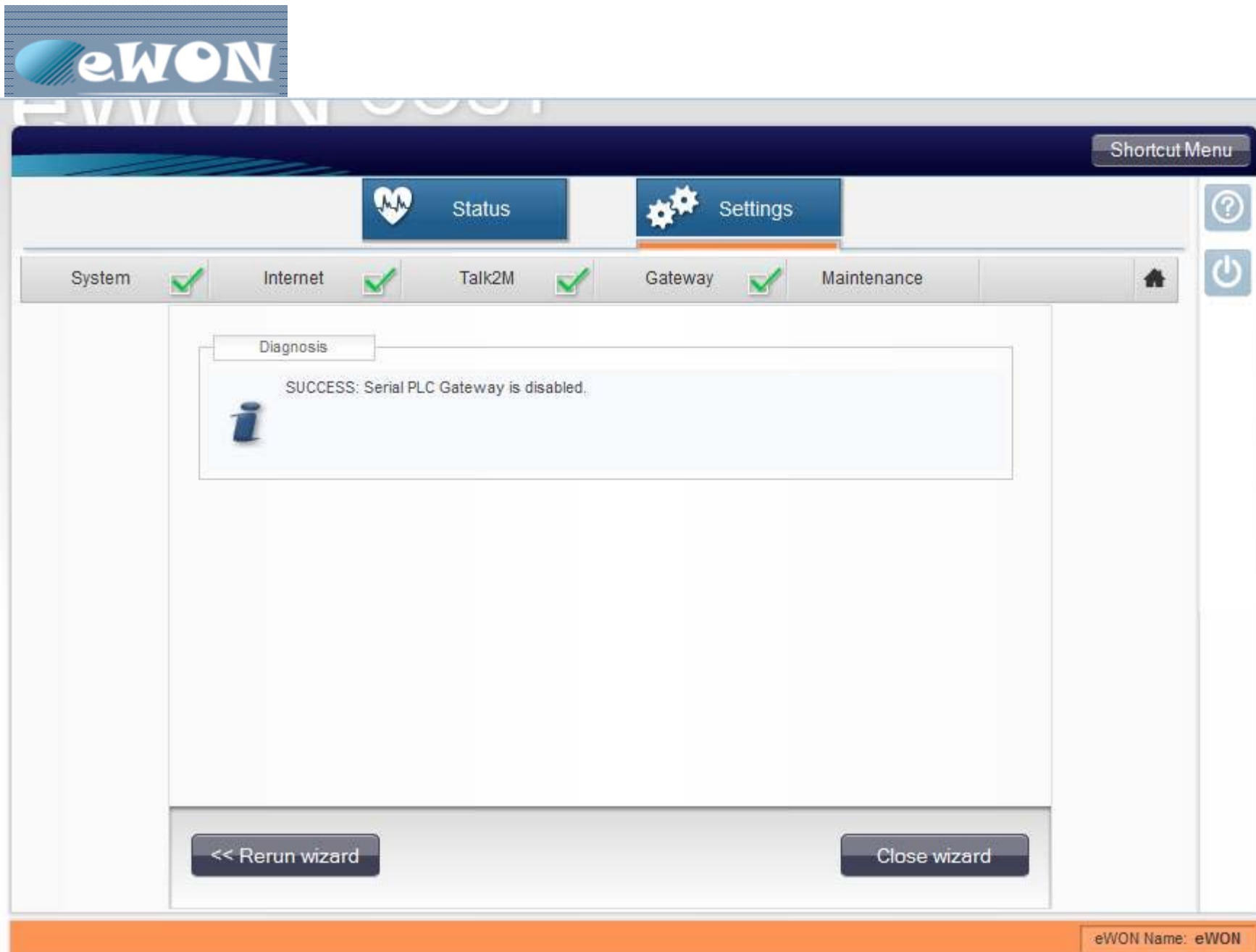
1

2

3

Save>>

eWON Name: eWON





Complete Installation

After your wizard session is complete you can now unplug from the LAN side of your eWON.

****** You may have to change your IP address back to get your PC back on the internet if you changed your PC to talk to the eWON @ 10.0.0.53.

Once your PC is able to get back on the internet you should see your eWON "online" in eCatcher.



You can go back to eCatcher now.

eCatcher (3.1.0 build 8425)

Active Connection

No active connection.

eWON list

+ [Icons] Connect [Refresh]

Action	Name	Status	Description	User(s) connects	Pool	Machine Type	Location	Customer
[Icon]	eWON Cosy Demo	Online			Cosy			
[Icon]	eWON 4005CD	Offline	Bobs demo unit		Device pool		Pittsburgh	eWON
[Icon]	4005 Domi	Offline	eWON with D...		Device pool	Mitsubishi	Pittsburgh	eWON
[Icon]	eWON Unitronics Test	Offline	Vision 350		Device pool	Unitronics	Pittsburgh	eWON
[Icon]	AB Demo	Online	Allen Bradley ...		Device pool	Allen Bradley ...	Pittsburgh	eWON

Your eWON should be online in your Talk2M account now.

my.talk2m.com Credit: -2,4 EUR Idle Robert Bradley [rby] Talk2M